

# KEY

NAME

DATE

PERIOD

Tuesday

4/2

## Unit 6, Lesson 2: Truth and Equations

1. Select **all** the true equations.

A.  $5 + 0 = 0$  No  $5 + 0 = 5$

B.  $15 \cdot 0 = 0$  Yes

C.  $1.4 + 2.7 = 4.1$  Yes

D.  $\frac{2}{3} \cdot \frac{5}{9} = \frac{7}{12}$  No  $\frac{2}{3} \cdot \frac{5}{9} = \frac{10}{27}$

E.  $4\frac{2}{3} = 5 - \frac{1}{3}$  Yes

2. Mai's water bottle had 24 ounces in it. After she drank  $x$  ounces of water, there were 10 ounces left. Select **all** the equations that represent this situation.

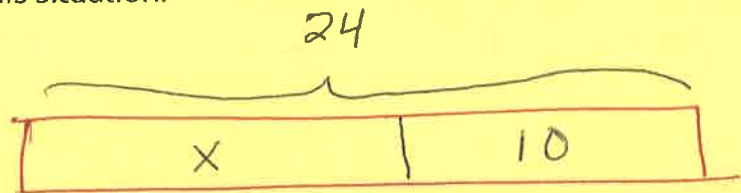
A.  $24 \div 10 = x$

B.  $24 + 10 = x$

C.  $24 - 10 = x$

D.  $x + 10 = 24$

E.  $10x = 24$



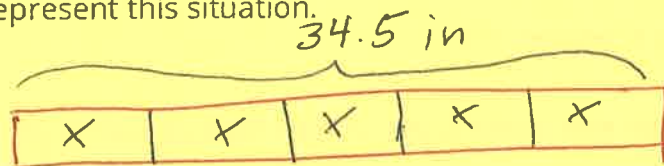
3. Priya has 5 pencils, each  $x$  inches in length. When she lines up the pencils end to end, they measure 34.5 inches. Select **all** the equations that represent this situation.

A.  $5 + x = 34.5$

B.  $5x = 34.5$

C.  $34.5 \div 5 = x$

D.  $34.5 - 5 = x$



NAME

DATE

PERIOD

E.  $x = (34.5) \cdot 5$

12c

times  
12x something

4. Match each equation with a solution from the list of values.

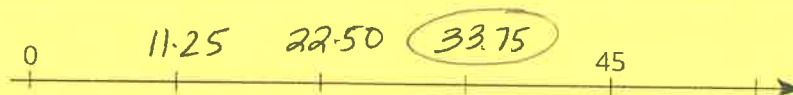
	Number		
A. $2a = 4.6$ $4.6 \div 2 = a$	3	2.3	1. $\frac{8}{5}$
B. $b + 2 = 4.6$ $4.6 - 2 = b$	4	2.6	2. $1\frac{5}{8}$
C. $c \div 2 = 4.6$ $4.6 \times 2 = c$	6	9.2	3. 2.3
D. $d - 2 = 4.6$ $4.6 + 2 = d$	5	6.6	4. 2.6
E. $e + \frac{3}{8} = 2$ $2 - \frac{3}{8} = e$	2	$1\frac{5}{8}$	5. 6.6
F. $\frac{1}{8}f = 3$ $3 \div \frac{1}{8}$ or $3 \cdot 8$	7	24	6. 9.2
G. $g \div \frac{8}{5} = 1$	1	$\frac{8}{5}$	7. 24

5. The daily recommended allowance of vitamin C for a sixth grader is 45 mg. 1 orange has about 75% of the recommended daily allowance of vitamin C. How many milligrams are in 1 orange? If you get stuck, consider using the double number line.

$45 \div 4 = 11.25$

OR  
 $\begin{array}{r} 3^2 45 \\ \times 1.75 \\ \hline 225 \\ 315 \\ \hline 33.75 \end{array}$

vitamin C (mg)



(from Unit 3, Lesson 11)

6. There are 90 kids in the band. 20% of the kids own their own instruments, and the rest rent them.

$20\% = .2 = \frac{1}{5}$

a. How many kids own their own instruments?

$\frac{90}{1} \cdot \frac{1}{5} = \frac{90}{5} = 18 \text{ kids}$  or

b. How many kids rent instruments?

$90 - 18 = 72 \text{ rent}$   
own

$10\% = 9 \text{ kids so}$   
 $20\% = 18 \text{ kids}$  or

$\begin{array}{r} 90 \\ \times .2 \quad (1) \\ \hline 180 \end{array}$  18 kids